



'WE LEARN TO LIVE TOGETHER, TOGETHER WE LIVE TO LEARN'

# WHAT'S NEW AT WESTMORLAND?

AUTUMN TERM 2010

## INSIDE THIS ISSUE:

ASTLEY HALL 2

ST. HELEN'S RUGBY 2

BUDDHISM 2

REMEMBER-ANCE DAY 3

HALLOWEEN 3

CHRISTMAS CARD 4

PLANNING AHEAD 4



Westmorland School's links with Nandavu School in Zambia continue to strengthen. Our pupils with the help from their kind families have put together drawstring bags filled with gifts which the children at Nandavu school will receive in time for Christmas.

A big thanks to everyone who has contributed as this will make Christmas a very special occasion for the children. The gifts sent have included essential items such as socks, soap, toothbrushes and pencils. In addition there are fun items such as bouncy balls, jewellery, fancy pen-tops and glitter.



Put this date in your diary as it is an event not to be missed!;

**16th December 2010  
1.p.m.**

You should all have received your official invitations designed by Connie Rochester to attend this day.

## 'BAGS OF BENEFIT'

Some of our staff have also made bags for the hard working voluntary teachers too.

Derwent House school are also sending teenage items to the older children from the village.

The main difficulty was posting these items over as it is very expensive. So small, lightweight items were requested. All classes made items which were sold at Tesco's to help raise money to cover the postage.

Mary Ramsdale, Mrs Ramsdale's Mother in law sewed all the draw string bags- Thank-you!

Luke Browning's Nan also made a huge contribution by knitting teddies which were sold to help with the fund raising. Thank-you!

To everyone who has contributed- Thank-you!

[community-school@junglejunction.co.uk](mailto:community-school@junglejunction.co.uk)

Above are Deborah, Mary and



Finest; three of the lucky girls who will be receiving these bags.

## SPECIAL POINTS OF INTEREST:

- Reflective clothing assembly taken by the police
- Firework safety taken by the Fire-brigade
- Relaxation Assembly taken by Jan Jones from Pontville
- Anti-bullying Assesmbly by Graham Kirby
- School closes for Christmas Friday 17 December 2010 at 1.00pm.

Re-opens Tuesday 4 January 2011 at 8.45pm.

## JESUS@BETHLEHEMSTABLE.COM

There will be a school play involving all our children called;

[jesus@bethlehemstable.com](mailto:jesus@bethlehemstable.com)

Followed by a Carol/song sing-along, stalls and raffle.

Then a visit from a famous man in red!

Please all join us for this celebration, helping us to get into the Christmas spirit.

Westmorland Christmas cards are also available for sale;

**a pack of 5 for £3.00**

(contact the school office for details)



## ASTLEY HALL

Miss Fisher with the help of Mrs Harrison organised a Humanities excursion for the whole school to Astley Hall in Chorley.

We all had a good look around all the amazing rooms with rather unusual looking furniture and found out how the Lords, Ladies and servants lived through the History of the hall.

The children were particularly interested in the more gruesome tales, seeing what they would

have eaten and the exercise chair (which was an early piece of gym equipment!)

They all made drawings of carvings on furniture that interested them and had a go at their own tapestry.

The tapestry decorating the drawing room told the story of Jason and the Argonauts which kept us all very interested.

This is the front of Astley Hall and some familiar faces in-front of a fire-place inside.



## RUGBY TRAINING WITH ST. HELENS

Paul Sculthorpe sent this report;

'We at Scully13 have been delighted to work with the students at Westmorland School providing Rugby League coaching sessions during the last three months.

The children have taken to the sessions extremely well showing great attitude and commitment to improving their skills

and techniques, also showing excellent discipline towards our coaches, staff and each other. Sport and Rugby League in particular can be a very powerful tool when used in a positive way. A big thank-you to Mr Kirby for the opportunity to work with these fantastic children.

The children have been a

credit to themselves and their school. Many of the children are trying rugby for their first time. We are very much looking forward to continuing our relationship with Westmorland school. We are also linking up with St. Gregory's school for future sessions using their field and giving their pupils chance and the opportunity to experience the great game of Rugby League too'.

**Why did Cinderella not get picked to play for Manchester United?.....**  
.....

## BUDDHIST CENTRE

As part of our studies on Buddhism the children and staff visited the Buddhist centre in Preston. Kelsang Pagpa (Buddhist monk and teacher) made us very welcome. The children answered and asked him many questions about his religion, which has no god.

We looked at a huge statue of a Buddha with lots of sweets and

chocolate at the base.

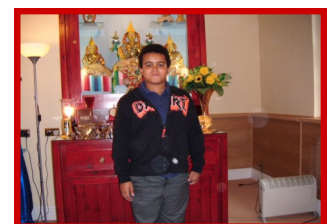
The centre is described as an 'oasis of calm' in the bustling city of Preston.

To the right is Marcel Yousif in the centre



Staff were particularly impressed by the relaxation sessions and Jan Jones from Pontville school came for a follow-up visit to explain how Pontville staff and pupils use Relaxation techniques regularly.

Thanks to Mrs Dean for organising this trip.





## MR DOWLING'S ROOM

Mr Dowling is our Deputy Head of Care, working with all the staff, children and families to ensure everyone has the highest level of emotional support and care.

He is just completing his counseling degree, so is now overseeing out 'Listening' mentors throughout the school.

His room now reflects an area of calm and peace for all staff and children to access. He

decorated the room himself with amazing murals, rugs, lighting and furniture to help create this 'haven of tranquility'.

Pupils assisted with the selection of decoration and furnishings.



Mr Dowling says 'I am really grateful to everyone for their help with setting up my room. I had previously everyone's second hand pieces of furniture and items that Mr Grice had made. Now it is all so colourful and inviting for children to come and relax and a wonderful environment for people to talk.'

The photograph shows Liam Simm in discussion with Mr Dowling.



## HALLOWEEN CELEBRATIONS

All staff worked together to give all children a very exciting Halloween celebration.

Everyone arrived on our last day of the first half term in very scary costumes.

We had characters such as; Witches, Vampires, Zombies, Skeletons and Spiders.

There was a special menu de-

signed by Katie Birchall and Mrs Bentley decorated the hall with amazingly spooky things.

In the afternoon the party games began with many exciting games such as;

apple bobbing, 'wrap your mummy' and Mr Lewis-Guinness's game of 'sort the Zombie snot!'



There were prizes for every game and each class had a gift

.....**Because she kept on missing the Ball!**

## REMEMBRANCE DAY

All staff and children at Westmorland school will really have a special understanding of Remembrance Day following a visit on Wednesday 10th November from two ex-service men;

- Stan Dickinson from the Royal Artillery served from the age of 18 years to 24 when he was retired through injury. He was born only doors away from

school and fought in the D-Day landings in Normandy.



- Trevor Riley from the Royal Air Force who served for 15 years, serving

in Northern Ireland and Falklands.

They spent the morning with the children telling them about their experiences and answering their excellent questions.

They raised and saluted the flag which was being put up by Ryan Lord (see photograph)

The following day Panthers class went to the memorial service held in Chorley which both Stan and Trevor were attending.

They each took turns to hold the flag standard for Stan.

**'We learn to live together,  
together we live to learn'**

**WESTMORLAND  
SCHOOL**

Weldbank Lane  
Chorley  
Lancashire  
PR7 3NQ  
Phone: 01257 278899  
Fax: 01257 265505  
E-mail: office@westmorlandschool.co.uk  
Part of the Witherslack Group of Schools

Meet our new member of  
Westmorland;



The School council have a big influence on how Westmorland functions and they have been particularly keen on increasing our numbers by adding a new pet.

They did research on what pet, care requirements, costs etc. After many imaginative suggestions we finally settled for a guinea pig called Tennis Ball.

She lives in the life of luxury in Room one and enjoys all her attention and high quality food and care. Each class has a rota and take it in turns to look after her. They have already discovered that her favourite food is cucumber and her favourite colour is pink!

They are now asking for her to have a friend but watch this space!



Please buy a set of your own Westmorland School Charity cards designed by our very own Kiernan Fowler when he was still only 7 years old.

You can have a pack of five cards and envelopes for only  
£ 3.00

Ask at the office for more details!

**PLANNING AHEAD FOR 2011**



Spring 1:  
Topic: The Incredible Egyptians  
R.E: Judaism  
Science: Habitats and Adaptations  
SEAL: Going for Goals  
P.E: Basketball and Badminton



Spring 2:  
Topic: Keen to be Green  
R.E: Christianity  
Science: Rocks and Soils  
SEAL: Good to be Me



P.E Health Related Fitness and Dance

